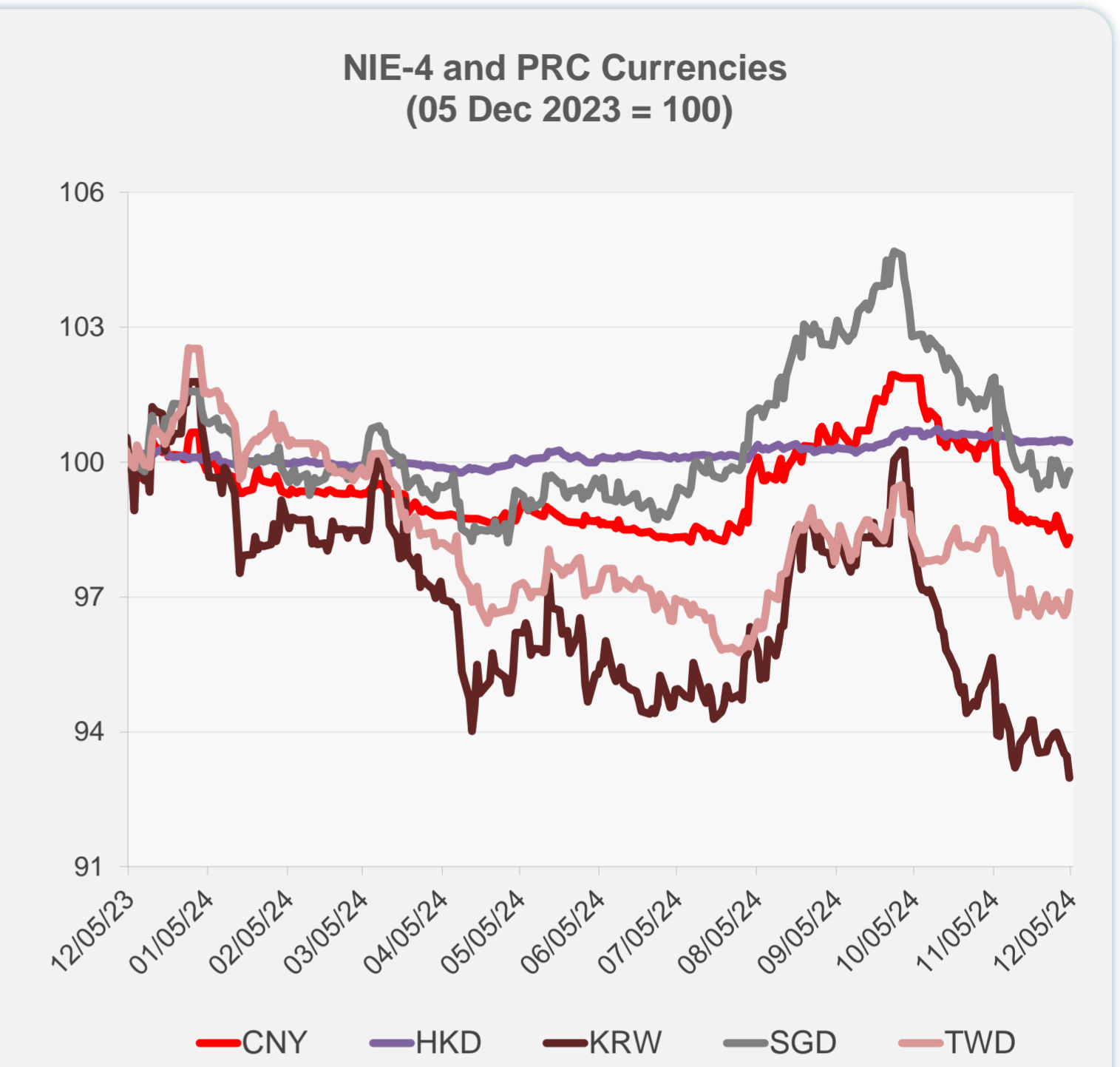
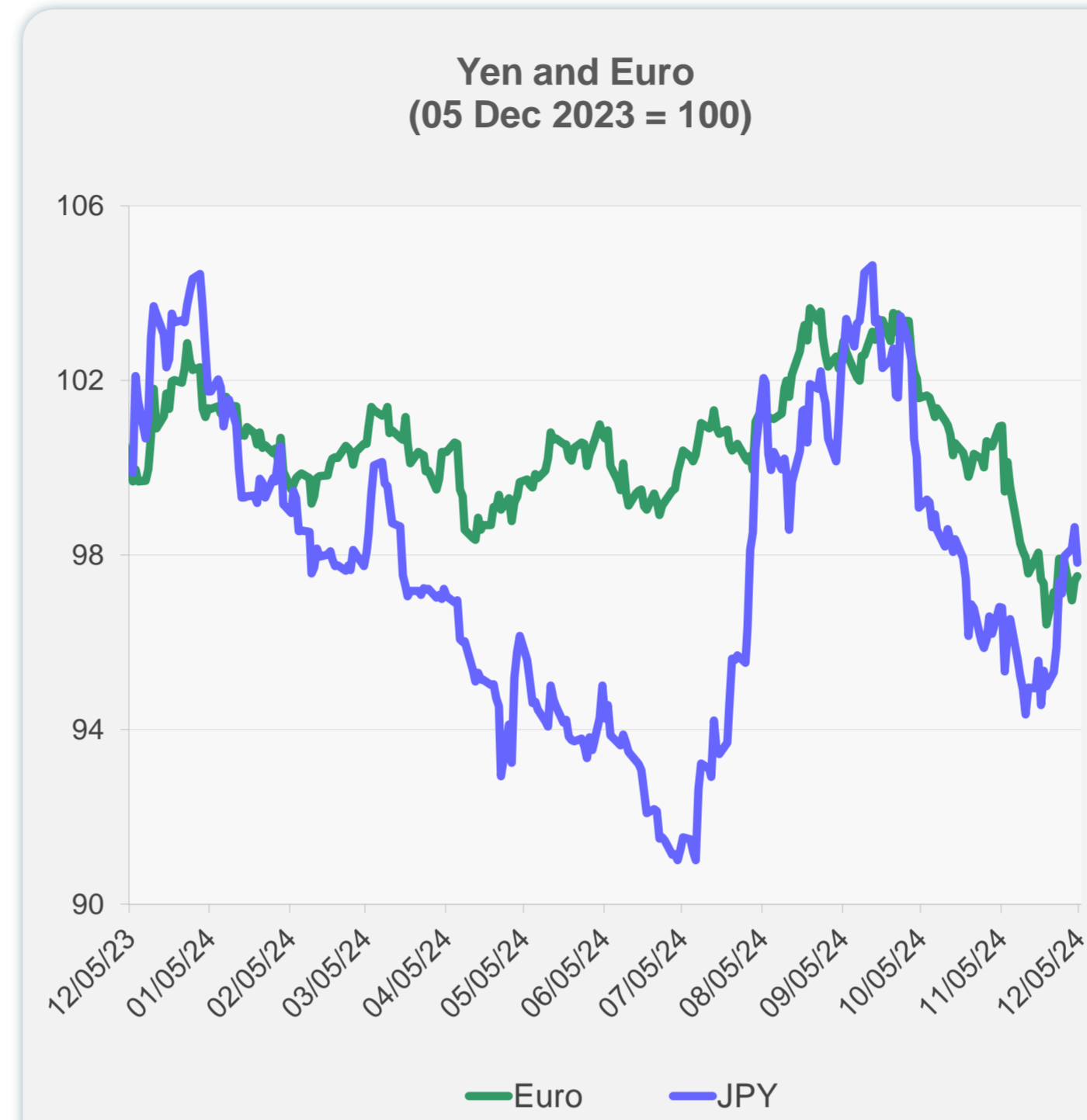
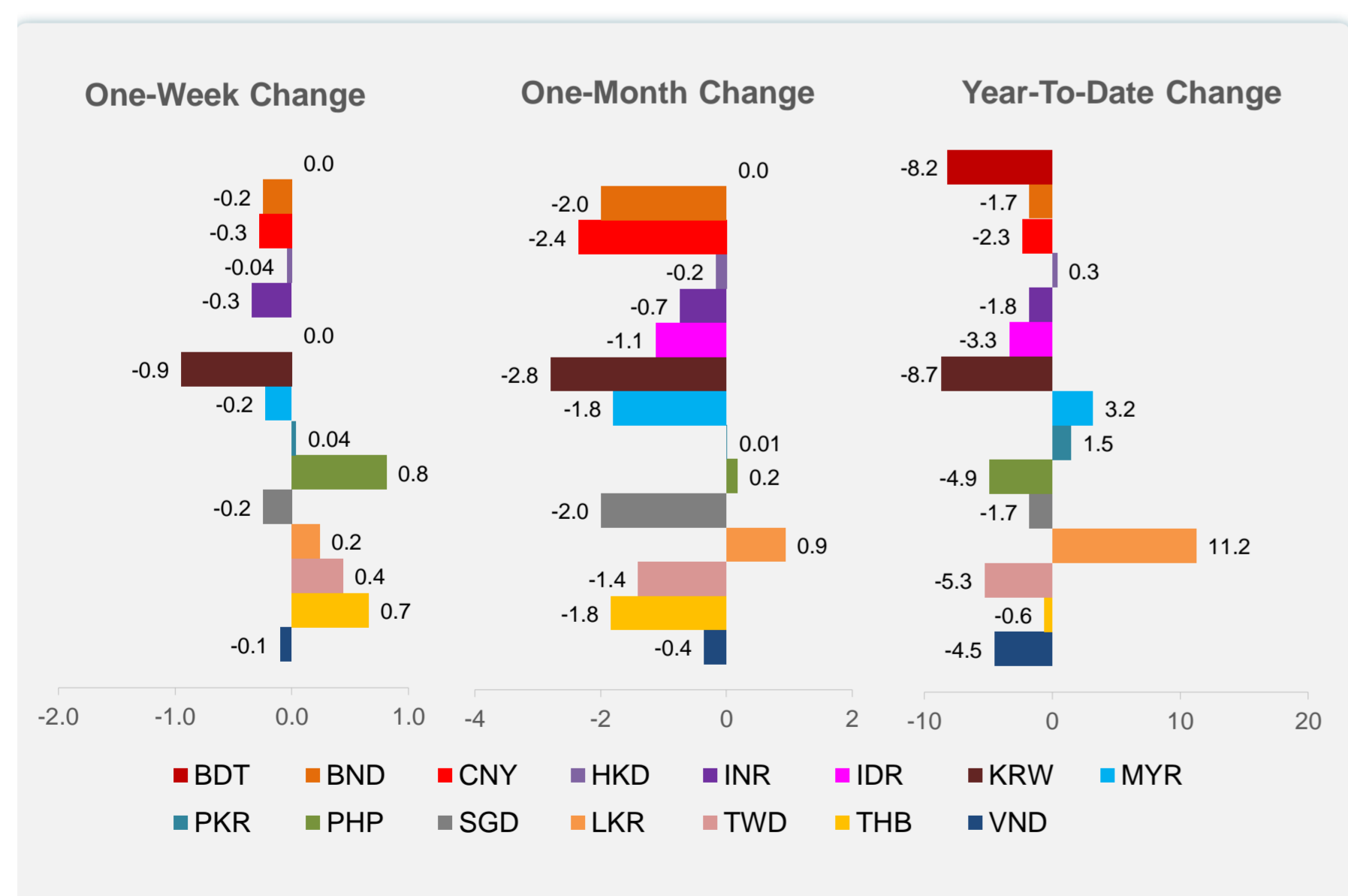
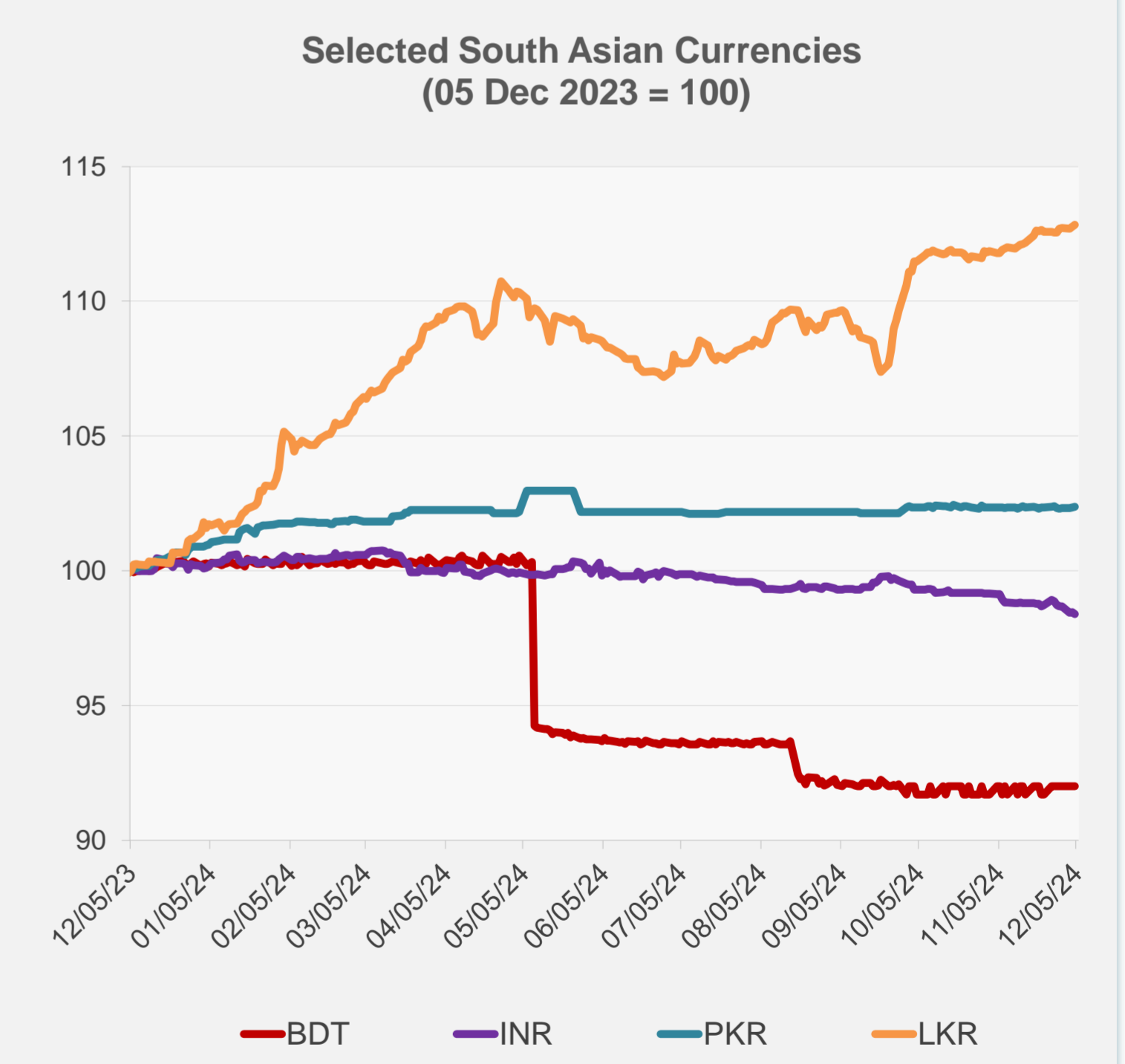
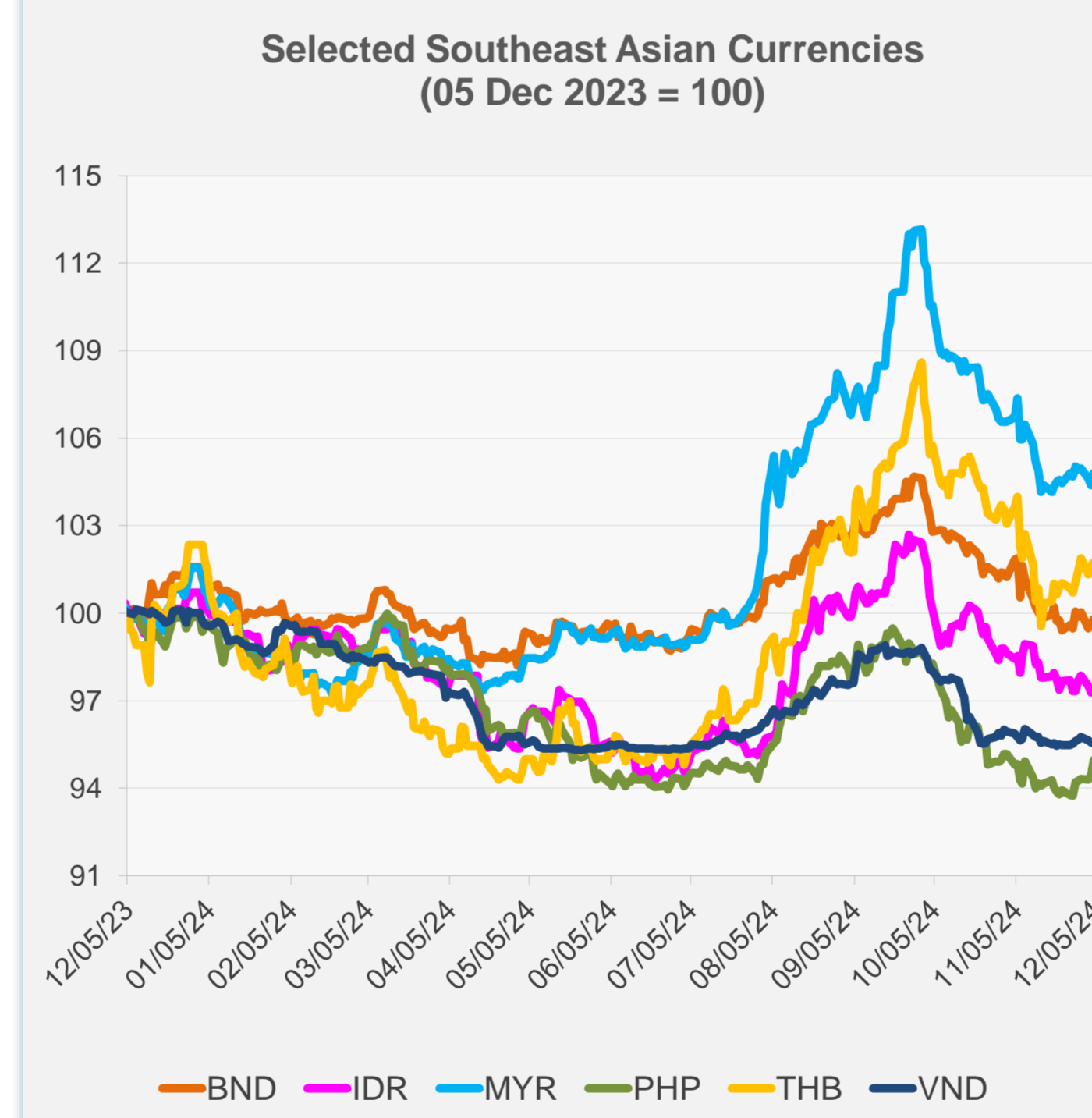


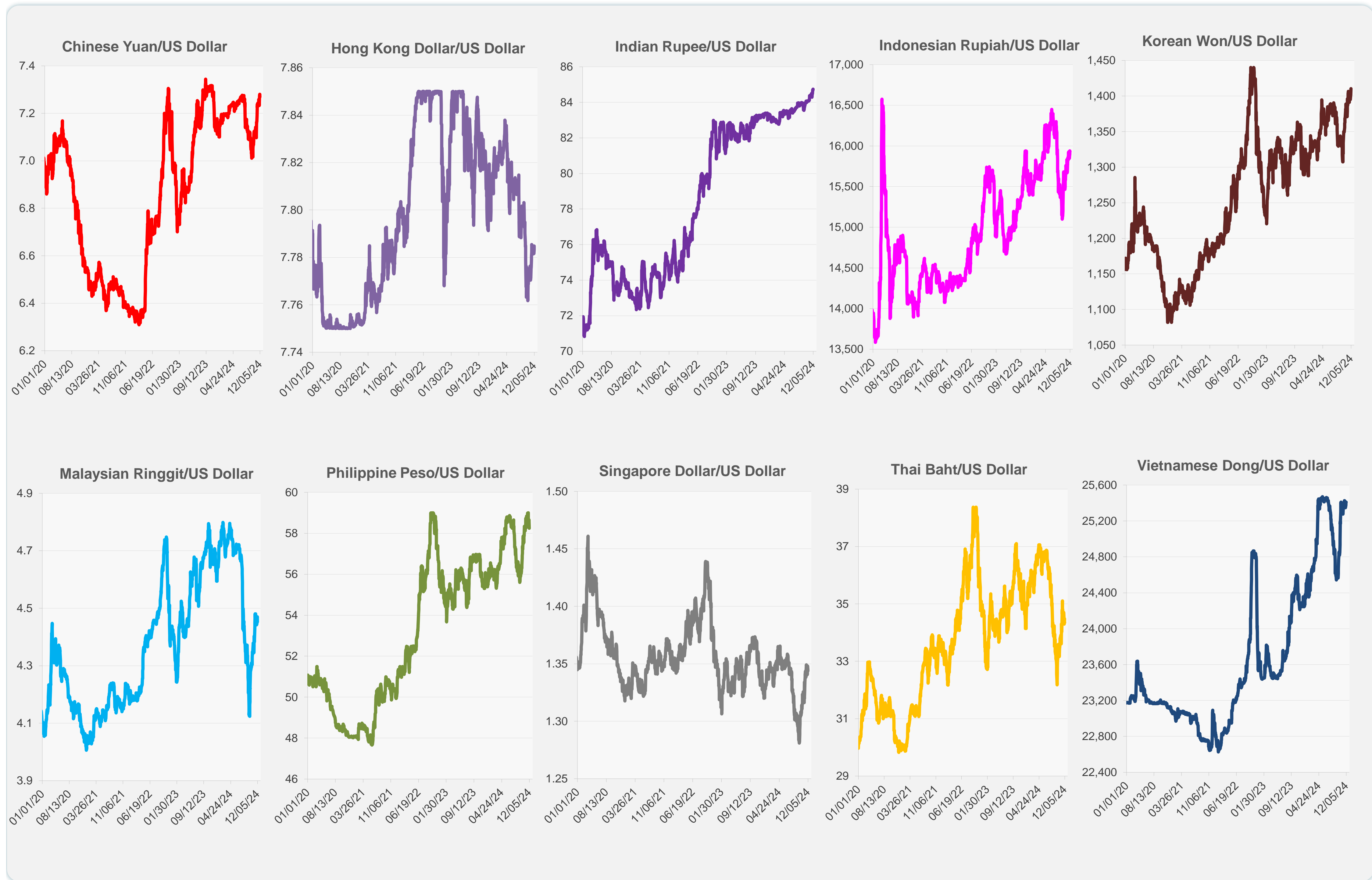
	Latest Closing	% change from Previous Day	% change from 01-Jan-24
Euro	0.95	0.12	-4.67
Japanese yen (JPY)	150.43	-0.83	-6.34
Bangladeshi taka (BDT)	119.50	0.00	-8.16
Brunei dollar (BND)	1.34	0.13	-1.74
Chinese yuan (CNY)	7.27	0.16	-2.32
Hong Kong dollar (HKD)	7.78	-0.02	0.34
Indian rupee (INR)	84.74	-0.06	-1.78
Indonesian rupiah (IDR)	15,930.00	0.06	-3.35
Korean won (KRW)	1,410.30	-0.52	-8.66
Malaysian ringgit (MYR)	4.45	0.39	3.18
Pakistan rupee (PKR)	277.80	0.03	1.45
Philippine peso (PHP)	58.24	0.57	-4.91
Singapore dollar (SGD)	1.34	0.13	-1.74
Sri Lanka rupee (LKR)	290.34	0.05	11.24
Taipei,China NT dollar (TWD)	32.42	0.43	-5.29
Thai baht (THB)	34.35	0.12	-0.60
Vietnamese dong (VND)	25,410.00	-0.06	-4.50



NIE = Newly Industrialized Economies



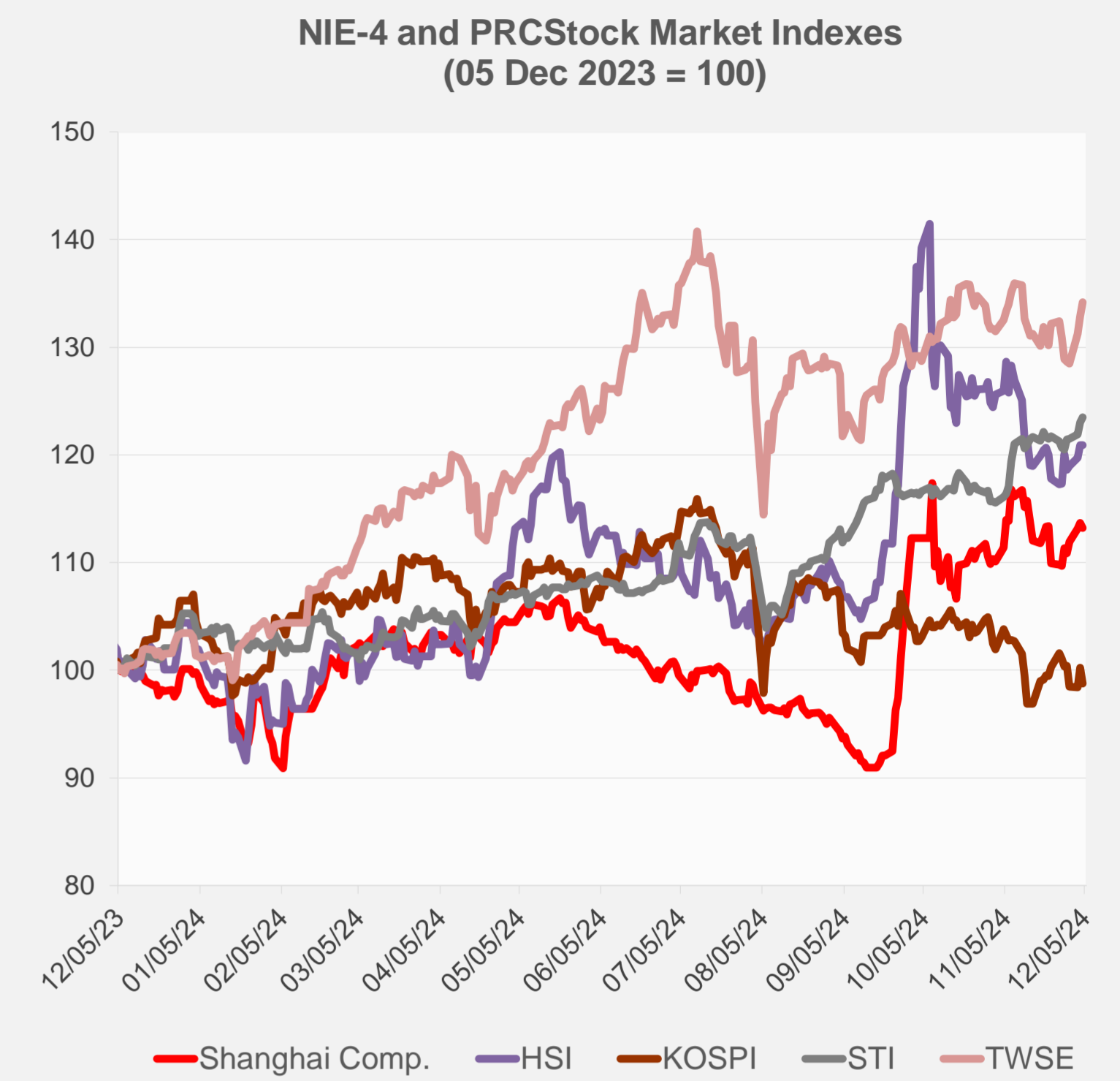
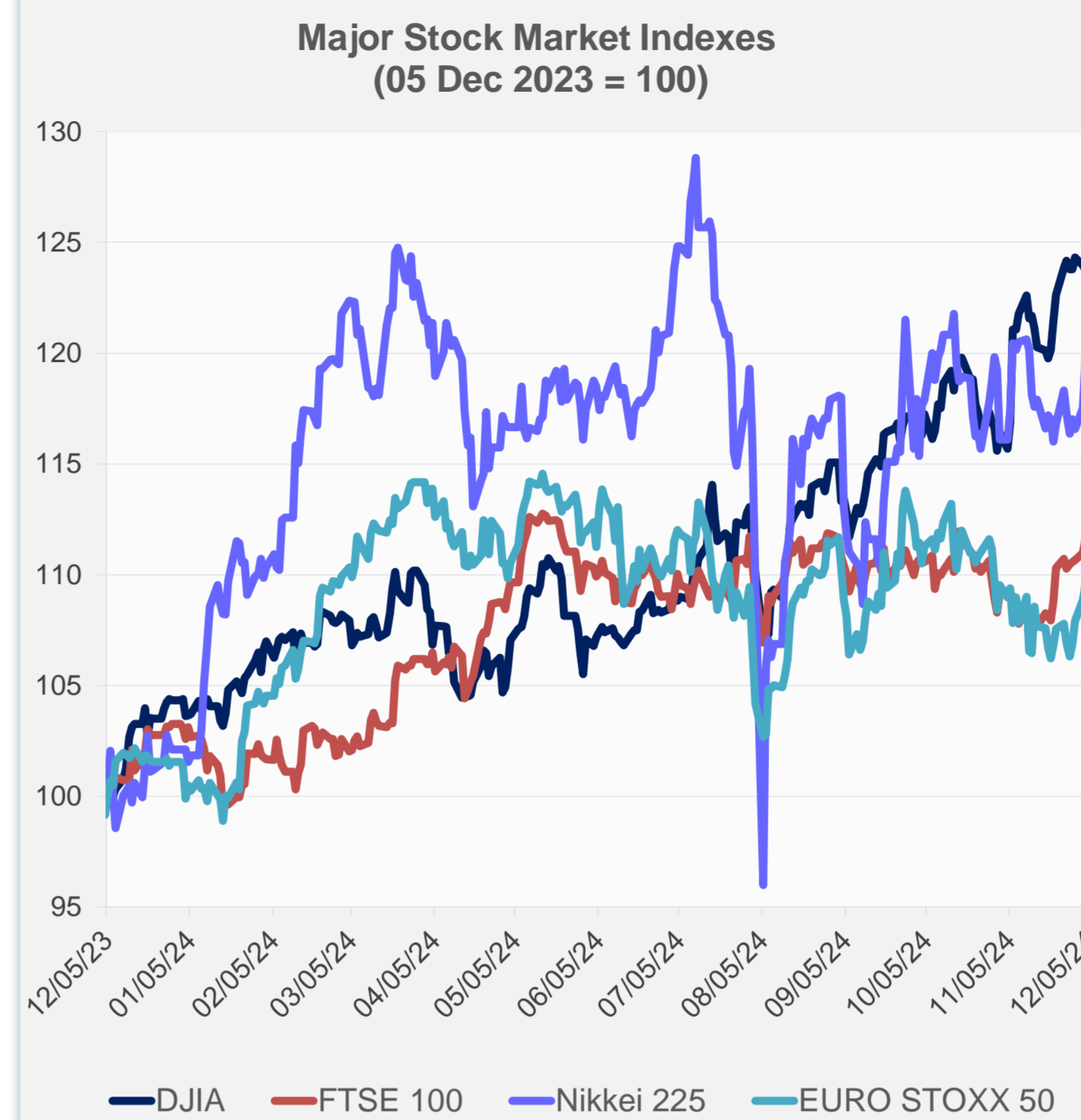
Note: Negative/Decreasing values indicate depreciation of local currency, and positive/increasing values indicate appreciation.
Source: ADB calculations using data from Haver Analytics.



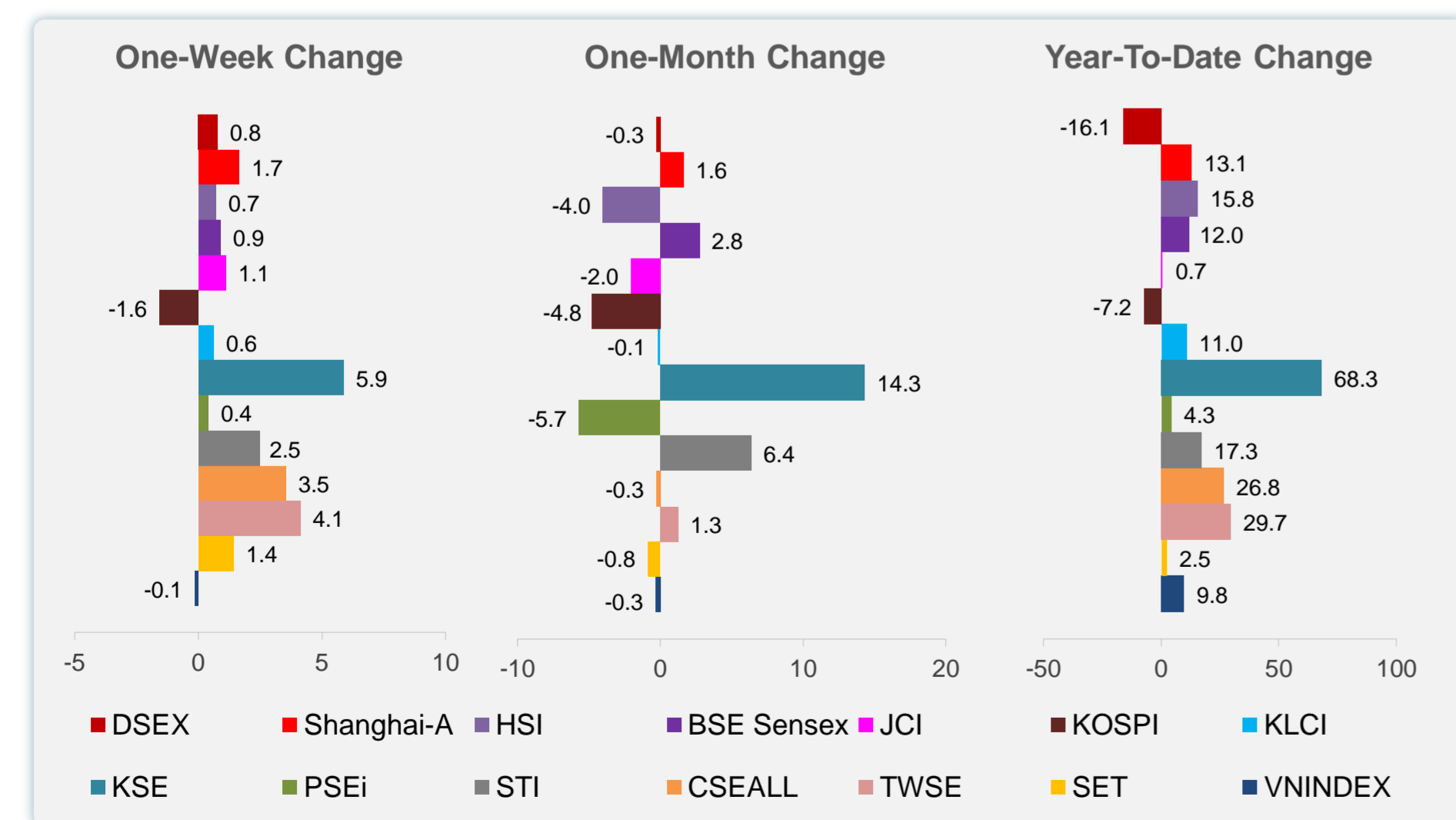
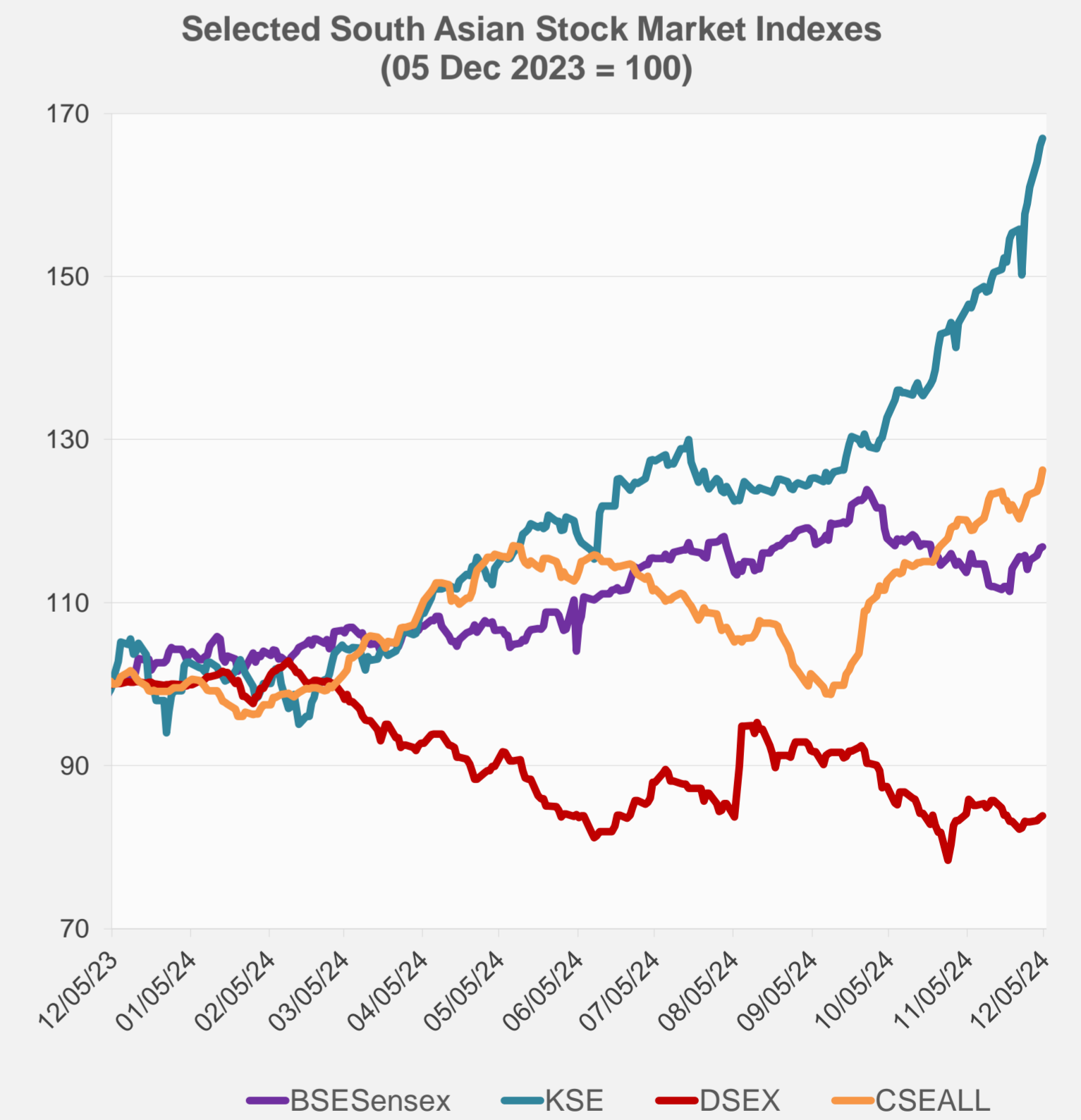
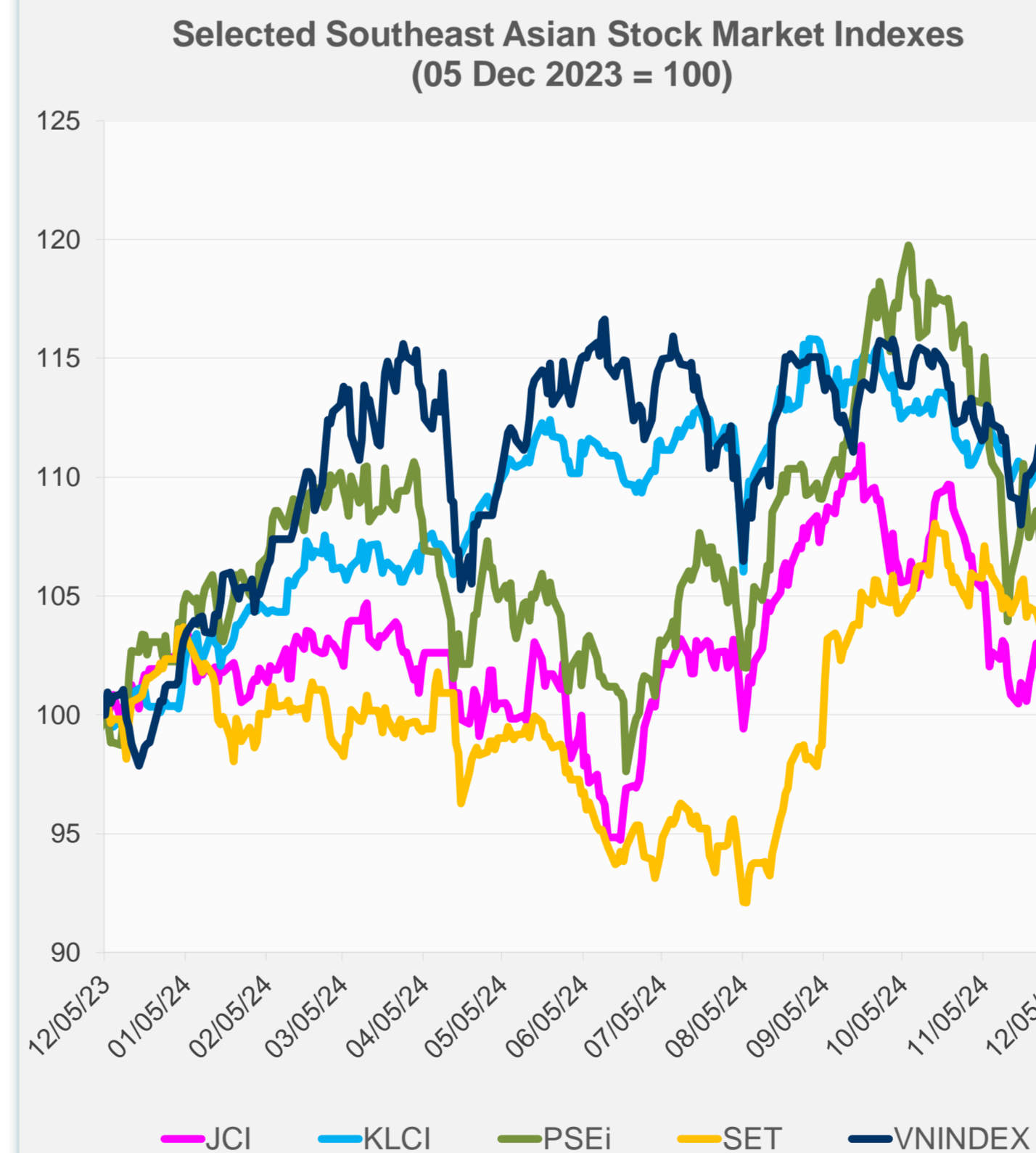
Source: Haver Analytics.

Daily Market Watch
STOCK INDEXES

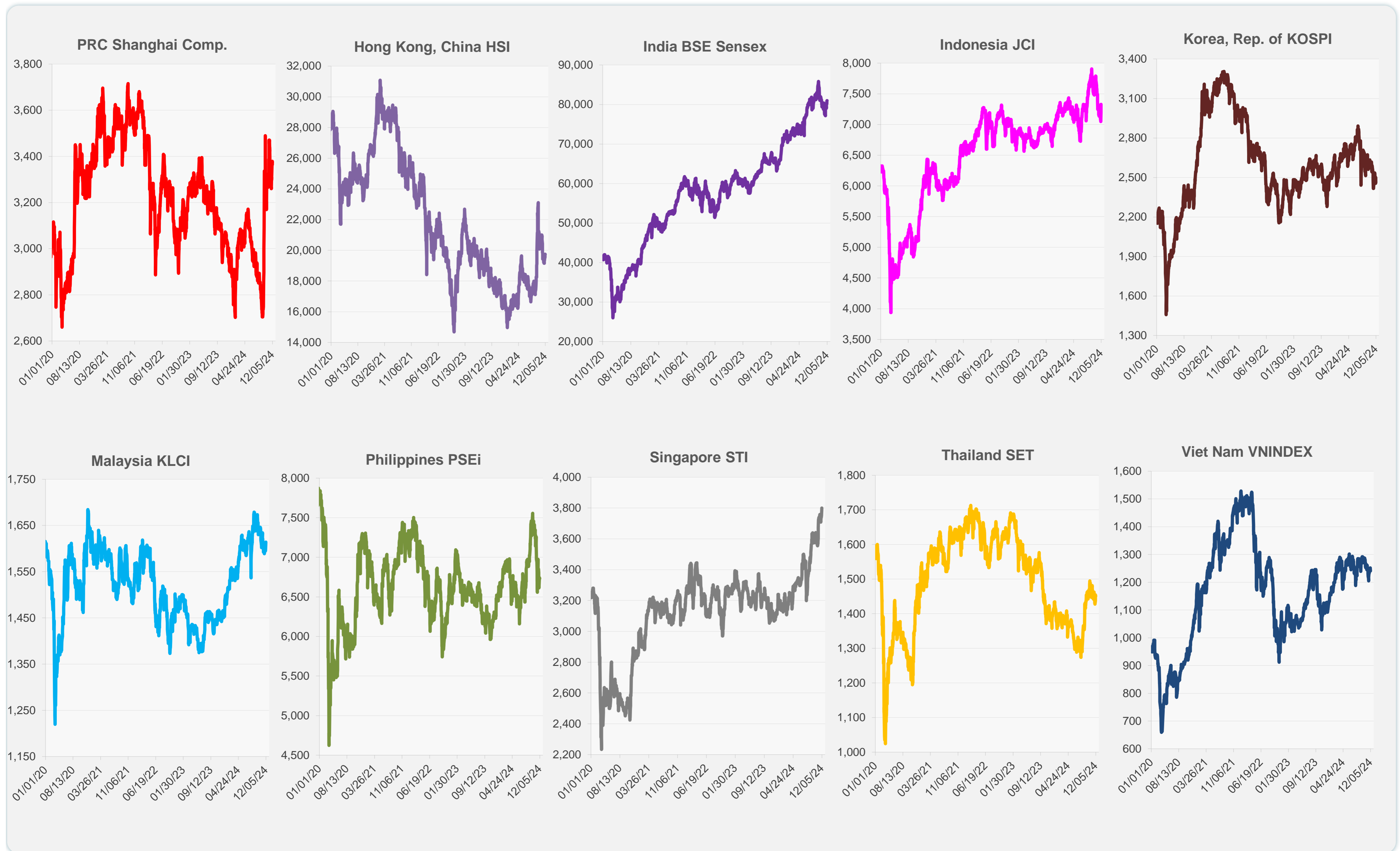
	Latest Closing	% change from Previous Day	% change from 01-Jan-24
US Dow Jones Ind Avg	45,014.04	0.69	19.43
US NASDAQ	19,735.12	1.30	31.47
US S&P 500	6,086.49	0.61	27.60
UK FTSE 100	8,335.81	-0.28	7.79
EURO STOXX 50	4,919.02	0.83	8.79
Japan NIKKEI 225	39,276.39	0.07	17.37
Bangladesh DSEX	5,238.37	0.24	-16.09
PRC Shanghai Comp.	3,364.65	-0.42	13.10
Hong Kong, China HSI	19,742.46	-0.02	15.81
India BSE Sensex	80,956.33	0.14	12.02
Indonesia JCI	7,326.76	1.82	0.74
Korea, Rep. of KOSPI	2,464.00	-1.44	-7.20
Malaysia KLCI	1,614.09	0.44	10.96
Pakistan KSE 100	105,104.33	0.52	68.30
Philippines PSEi	6,729.96	-0.06	4.34
Singapore STI	3,799.94	0.36	17.27
Sri Lanka CSEALL	13,511.73	1.29	26.82
Taipei, China TWSE	23,255.33	0.99	29.69
Thailand SET	1,450.82	-0.27	2.47
Viet Nam VNINDEX	1,240.41	-0.75	9.78



NIE = Newly Industrialized Economies



Sources: ADB calculations using data from CEIC Data Company and Haver Analytics.



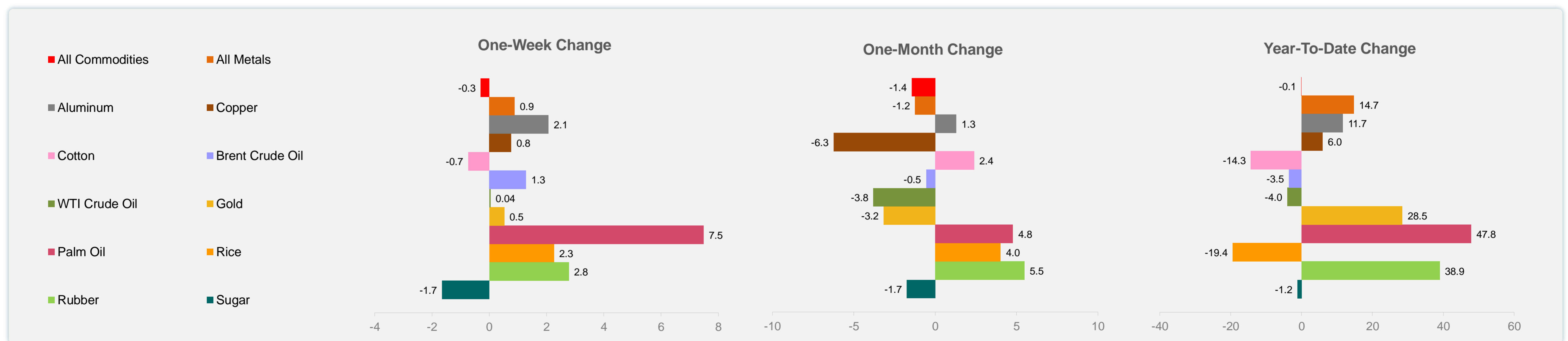
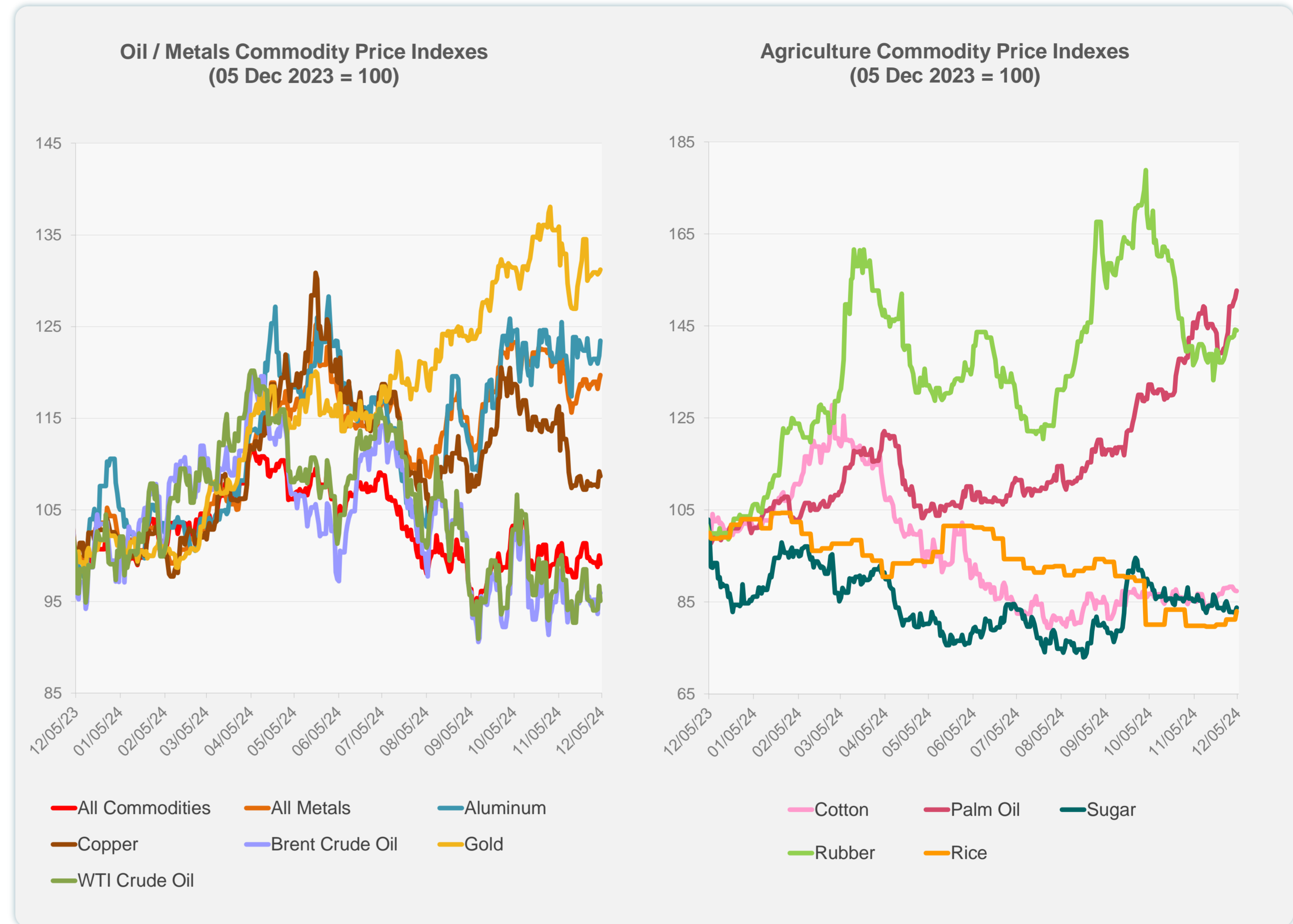
Sources: CEIC Data Company and Haver Analytics.

Daily Market Watch
COMMODITY PRICES

5 December 2024, 9:00 AM Manila

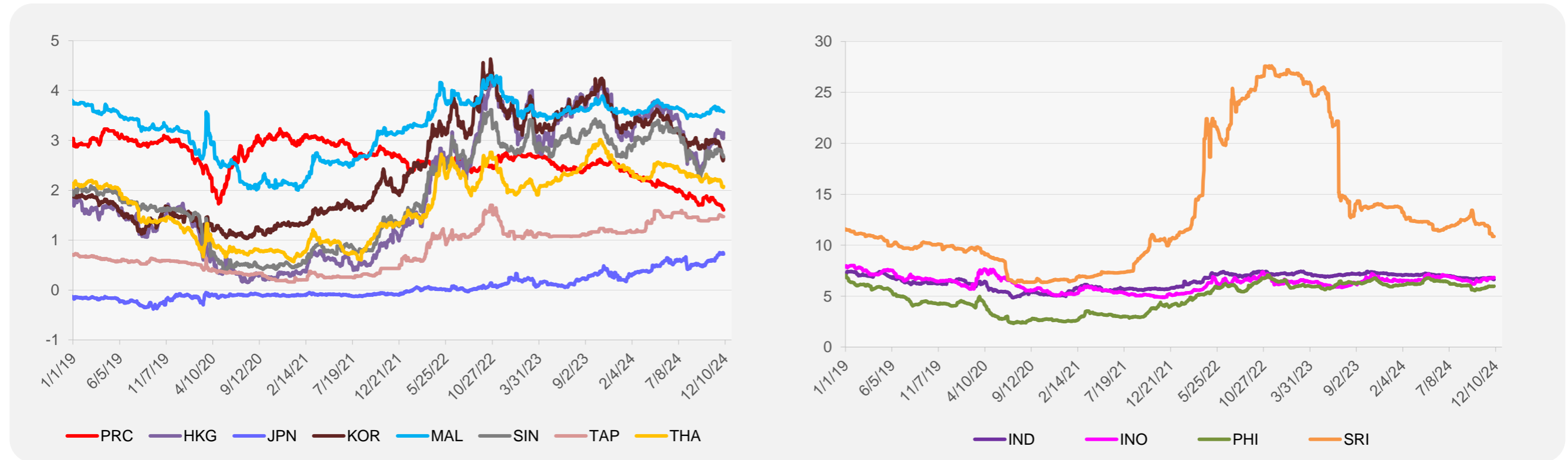
	Unit	Latest Closing	% change from Previous Day	% change from 01-Jan-24
S&P All Commodities	US\$	535.17	-0.90	-0.09
S&P All Metals	US\$	318.33	0.42	14.75
Aluminum	US\$/metric ton	2,619.14	1.34	11.67
Copper	US\$/metric ton	8,969.99	-0.45	5.98
Cotton	US cents/lb	67.25	-0.03	-14.33
Brent Crude Oil	US\$/barrel	74.85	-0.19	-3.54
WTI Crude Oil	US\$/barrel	68.75	-1.70	-4.05
Gold	US\$/troy oz	2,649.90	0.24	28.45
Palm Oil	US\$/metric tonne	1,195.94	1.10	47.83
Rice ¹	US\$/metric ton	543.00	2.26	-19.44
Rubber ²	US\$/kg	240.50	-0.12	38.94
Sugar	US cents/lb	20.23	1.25	-1.17

¹ Latest closing price from 4 December 2024.
² Singapore Exchange, Ribbed Smoked Sheet Rubber.

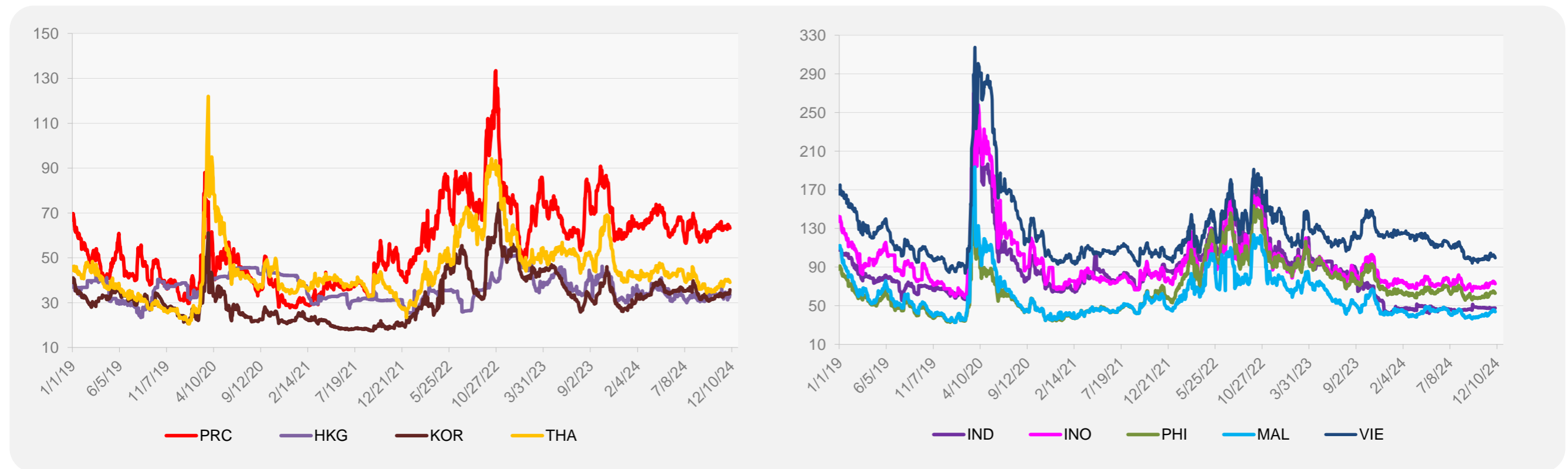


Source: ADB calculations using data from Bloomberg.

5-YEAR LOCAL CURRENCY GOVERNMENT BOND YIELDS (%)



5-YEAR CREDIT DEFAULT SWAP¹



¹ In USD and based on sovereign bonds.
Source: ADB calculations using data from Bloomberg.